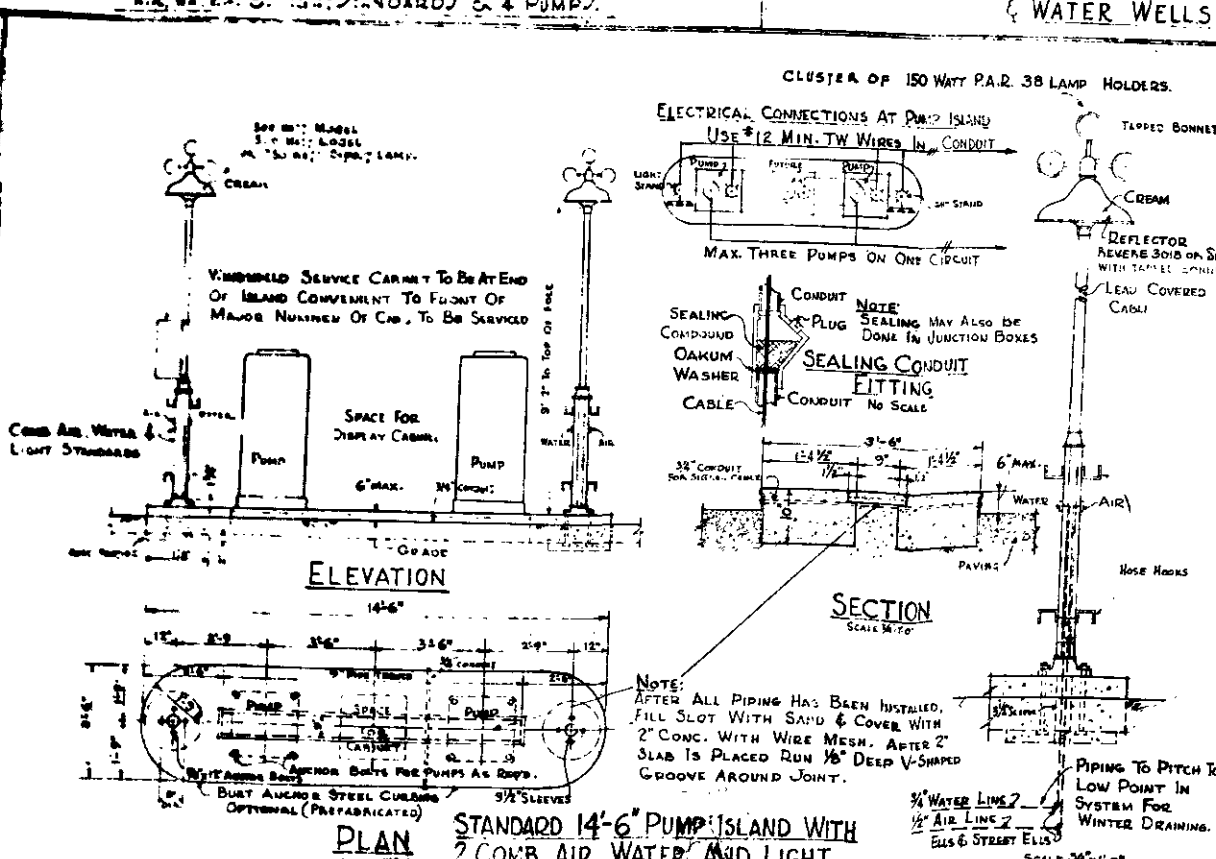
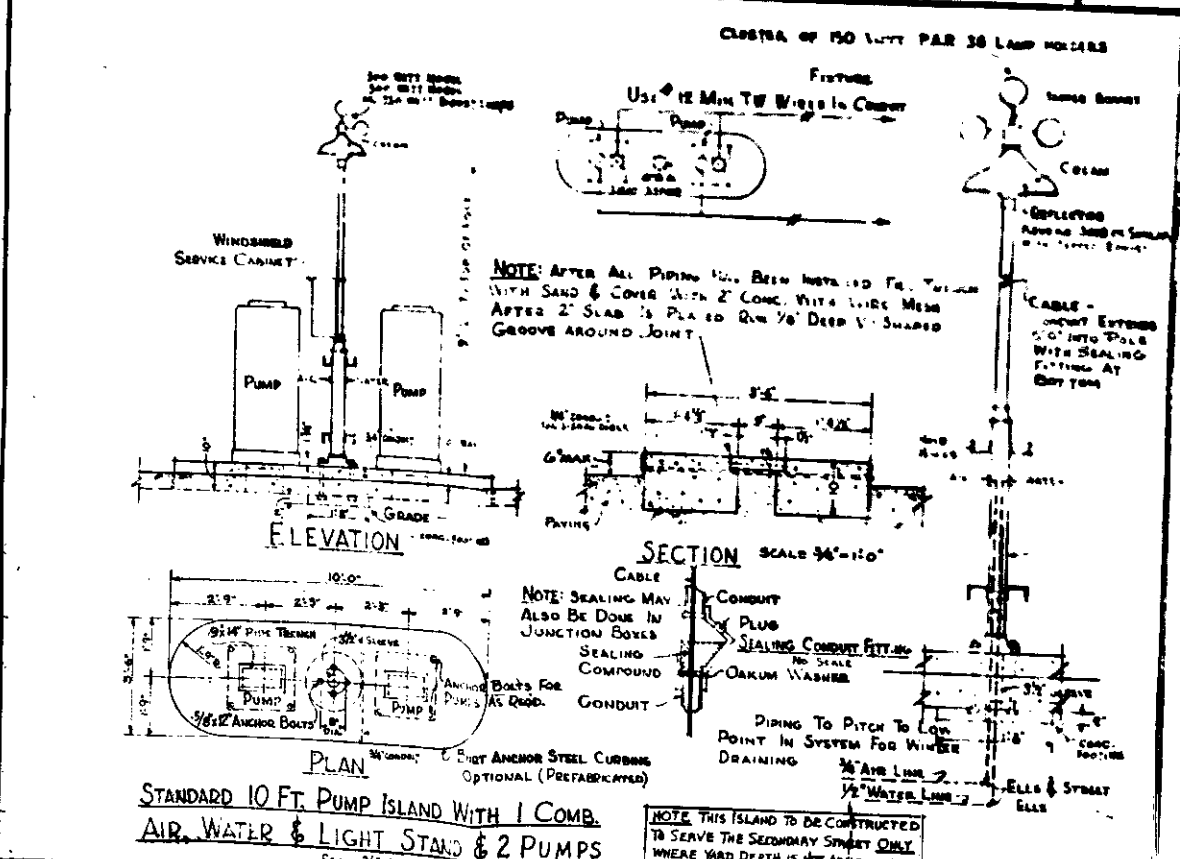
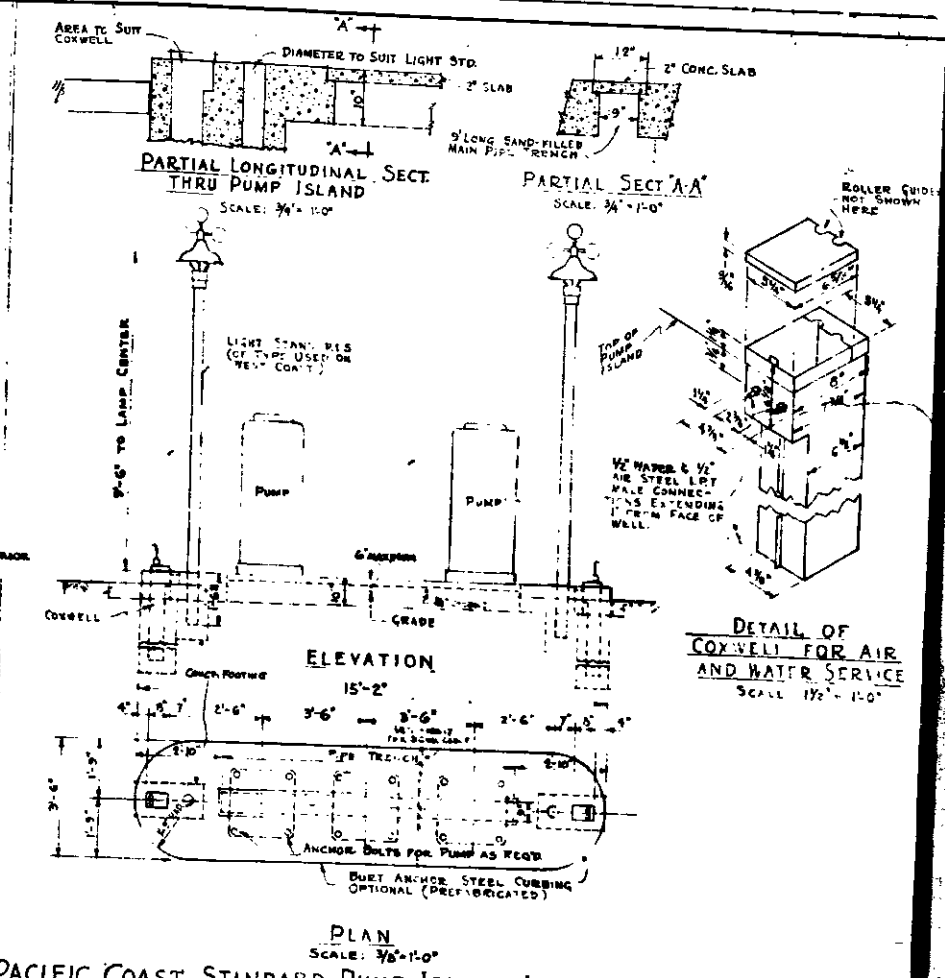
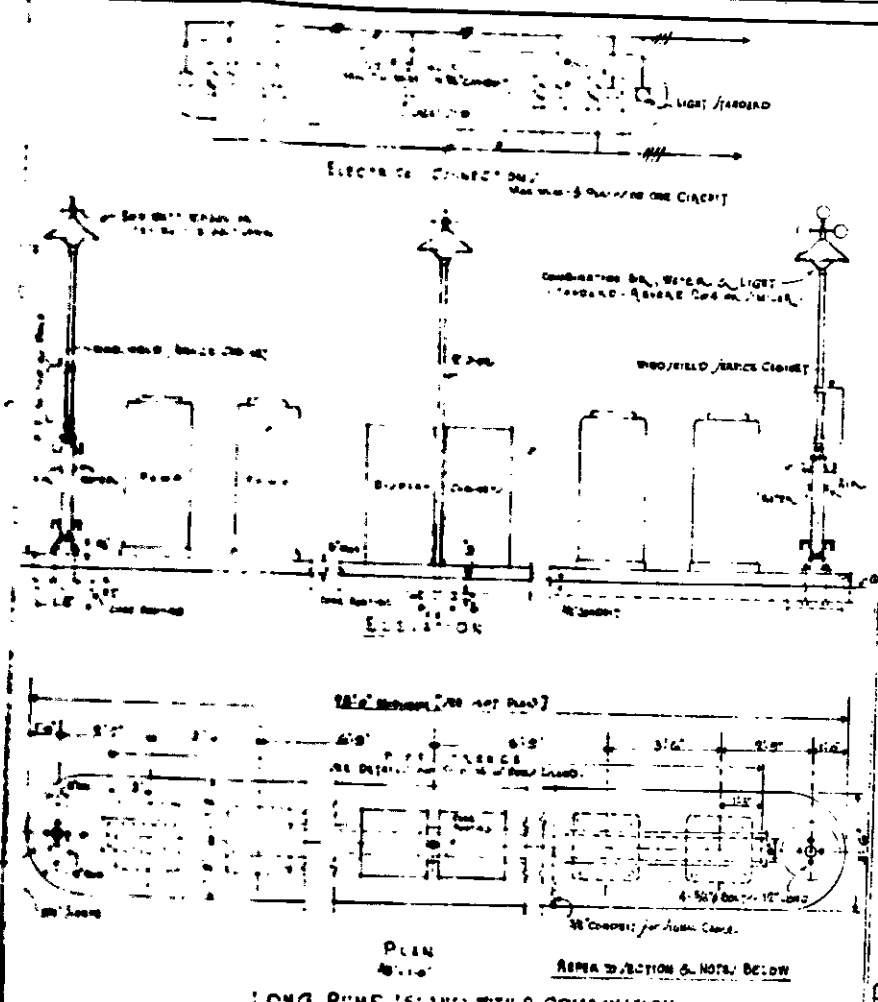
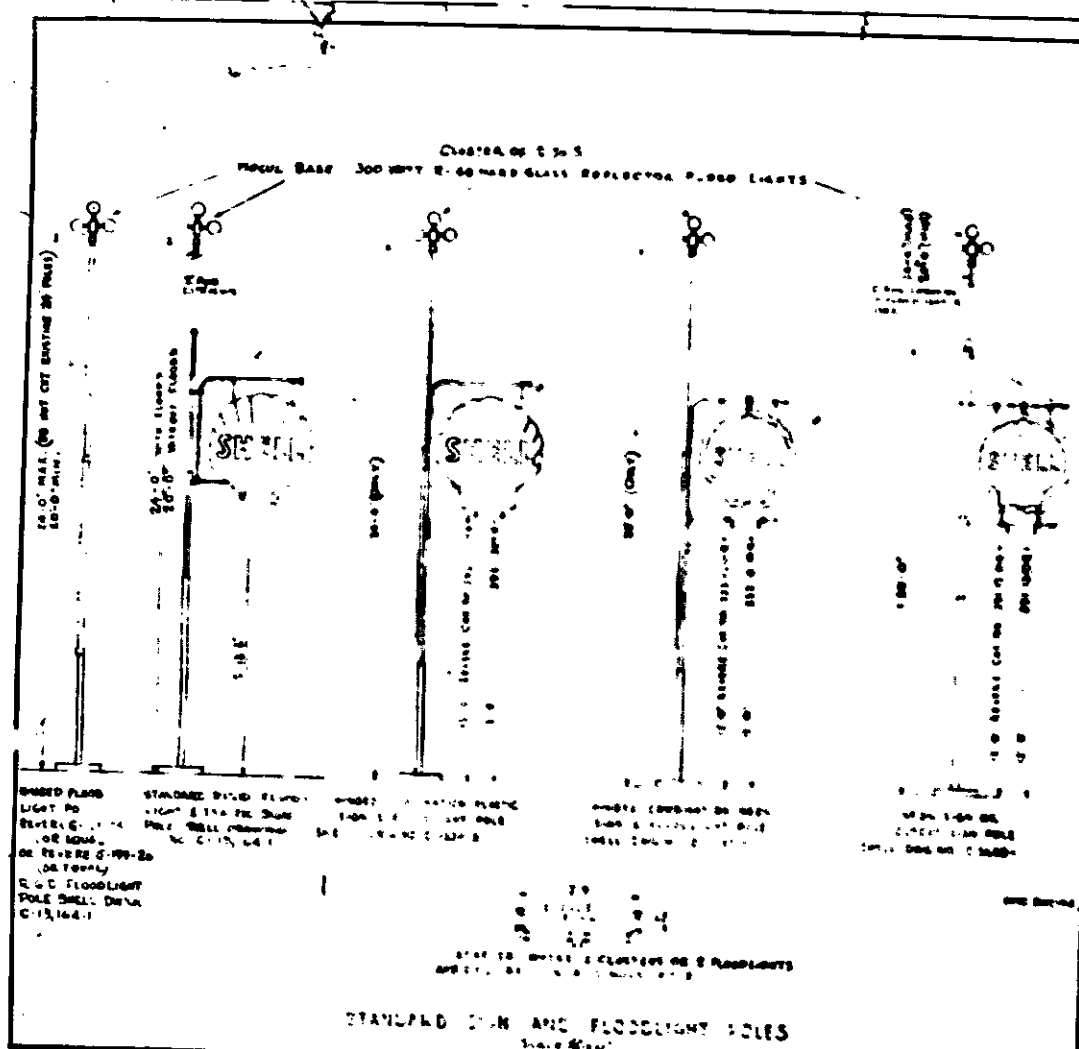


**SHELL OIL COMPANY**  
 INCORPORATED  
 NEW YORK, N. Y.

**1949 STANDARD SERVICE STATION PUMP ISLANDS & MISC. YARDWORK DETAILS**

SCALE AS SHOWN ON DRAWING  
 DATE: JUNE 1948  
 DRAWN BY: W. V. D.  
 CHECKED BY: W. V. D.  
 NAME: W. V. D.  
 TITLE: ENGINEER

**D-12428-6**



**SHELL OIL COMPANY**  
 INCORPORATED  
 NEW YORK, N. Y.

**1949 STANDARD SERVICE STATION PUMP ISLANDS & MISC. YARDWORK DETAILS**

SCALE AS SHOWN ON DRAWING

DATE: JUNE 1948

CHKD. BY: W. V. D.

ENGR. BY: W. V. D.

APP'D BY: W. V. D.

PROJECT: D-12428-6

SECTION THRU CONCRETE PUMP ISLAND

CONCRETE CURB 38"=1'-0"

SECTION THRU CONCRETE PUMP ISLAND

CONCRETE CURB 38"=1'-0"